

# NEW!

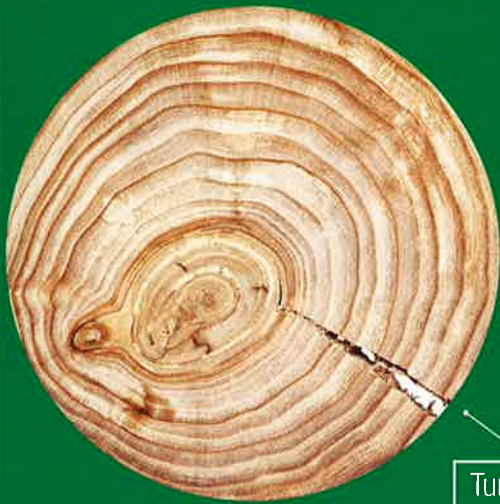
# SuperChipper by



Turn branches and prunings into garden mulch, save on dump costs, no more un-neighbourly burn offs, return valuable nutrients to your garden soil from which they originated.

- Your choice of **Honda** or **Briggs & Stratton** power.
- **Tough housings** formed from 5mm solid steel plate.
- **Twin belt drive** protects engine against sudden load shock.
- **Twin cutting blades** shear branches against case-hardened, steel anvil.
- **Easy starting** – manual clutch disengages cutter disc.
- **Self-feeding.**
- **Proudly Engineered in Australia.**

65mm



THE COX SUPERCHIPPER ... IT CLEANS UP GARDEN WASTE, PROVIDES FREE ENRICHING MULCH, CUTS DUMPING COSTS. A REAL ENVIRONMENTAL ASSET!

Turns up to approximately 65mm thick branches into chips from 6mm – 15mm, ideal for garden & orchard mulch and compost.



**Cutting Chamber**

Easy Access to chipping chamber and blades. Robot welded flywheel. Dual super strong blades, removable for sharpening.



A pile of prunings reduced to a barrow load of fine, nutrient rich mulch, in just minutes. Retains moisture in the garden, too.



**Handle**

3 handle positions and 3 chipper body settings to assist with transportation and balance.

COX SUPERCHIPPER SPECIFICATIONS		
MODEL	CGR06B	CGR06H
Motor	Briggs & Stratton	Honda
Engine	13063206 6.5HP (4.8 kw)	GXV 200 6.5HP (4.8 kw)
Weight	72kg	72kg
Height	1200mm	1200mm
Approx Capacity	up to 65mm branches	up to 65mm branches
Price	\$	\$



**FREECALL 1800 330 444**  
**www.coxmowers.com.au**

70 Landseer Street, Acacia Ridge, Brisbane, Qld 4110  
P 07 3323 2222 | F 07 3344 6233  
E sales@cox-mowers.com.au

COX INDUSTRIES (AUSTRALIA) PTY LTD ABN 34 050 991 038

COX SUPERCHIPPER IS AVAILABLE ONLY FROM COX AUTHORISED, SERVICING DEALERS. SEE OUR WEBSITE FOR YOUR NEAREST.

Proudly produced & printed in Australia. Due to constant product development, specifications are subject to change without notice. Always read carefully the safety instruction supplied before operating this product.

Scan the QR barcode for a link to our website

